

Anna To The Rescue

Cardial (Pedro Quintela) & Independent Thief
June 12th 2011

Objectives:

- Get inside the underground temple.
- Rescue the mayor's daughter.
- Kill Kyron (he can't be knocked out).
- Acquire the ritual blade.
- Get the Sleeper.
- Find the keeper medallion.
- Loot Goal: 3800 (Normal), 4000 (Hard), 4200 (Expert)
- Get back to the submarine with the mayor's daughter.

NOTE

The only difference in the difficulty levels is the loot goal. Go for Normal to make things easier.

Key List (In order of appearance)

Key Name	Location	Opens
Earth Key	Footlocker in pagan village building where woman is patrolling around fire.	Ward located on bottom of fallen tree
Orange Key	Room after head ball room	East gate in temple (1 of 2)
Yellow Key	Climb pile of dirt in room with gold vase in center of room. Look behind wall.	Lockbox labeled "Open only front barrier," SW corner
Orange Key	On a wall with a bunch of other keys. A floor plaque says, "You will not choose a key the color of the sky, etc."	East gate in temple (2 of 2)
Silver Key	Near skeleton at end of lava trench above chapel.	Black&Blue portals X 3 Lockbox/lever labeled, "Open only front barrier"
Exit Key	Kyron's belt	Lockbox near arched door, South hall
Cell Key	Thief near child's cell	Cell door

I unlocked the tree ward with the Earth Key and ended up in an underground temple area. There's a floor plaque that says, "the hierarchy begins at the top."

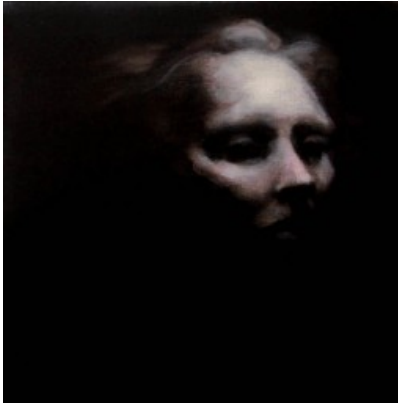
There are 4 buttons that have to be frobbed in a specific order, corresponding to the letters on each of the pyramid levels. From top to bottom, the order is NSWE.

How do I solve the picture puzzles? Every time I frob one, I lose health!

The statue near the gate reads a poem. Each painting is titled after each line in the poem. Frob them in this order:



I know everything.



I feel everything.



Was it me? Us? Them?



Or was it you?



Don't ask me.



Ask yourself.

I'm in this room with a floor plaque that reads, "To access the key, you'll need to hit the hole." There's a zombie head that bounces like a ball.

To your west is a 3-gate doorway. To your north, on the opposite side of a pinkish barrier, are three square holes in the floor. Toss the head into each of the holes to open the gates.

I opened the three gates by tossing the head into the holes. Now, I'm in this room with a fake key on a pedestal. There are also two platforms where I see keys appearing and then disappearing.

You can't get the key from this side. Go to the pedestal and look up. You'll need 2 ropes to get up there. Once you're on the other side, you can snatch the key.

Where is the medallion?

In the picture puzzle room you'll find a dead guy next to a fallen ladder. Rope up to the grate and open it. Climb back down. Fire another rope into the center of the hole.

I went back into the head ball room and got locked in again!

Go down into the hole and throw the lever a couple of times to open the gate.

I'm in a room with 3 doors, behind each, is a haunt. How do I open the small wall safe on the wall near the ladder?

You have to cross over to the opposite room and do some things first.

What am I supposed to do in the Dragon's Gaze trap?

Nothing. Read the scroll and grab the rope arrow. The exit is the door above with the stylized Quake symbol on it.

I see 4 buttons high above the entrance to the gas trap room. What do they open?



Turn around (180 degrees from the buttons). The stained glass should now be raised a third of the way up.

Where's the key to open the other blue portal West of the chapel?

Above the entrance to the creepy chapel is an entry. Rope up and go left. If the gate is closed, go to the big round face and throw the lever again, as it may have reset itself. See screenshots on next page.



The lever (right) opens the treasure alcoves in the adjacent room where you have to avoid the demons' gaze. To open the gate above the creepy chapel (left), the same lever is thrown in the opposite direction. Once up (via rope), find the skeleton.

Where's the unholy glove?



Find the door with the red pentagram (left). Put a rope into the beam (white 'x'). Head for the rafters, and you'll find an opening.

Make sure you save first.

How do I find Kyron and what's the best way to kill him?

Once you get the ritual blade, two doors will open: (1) In the room where the floor is half checkerboard. (2) In the red-brick hall just West of the hot bars, where you finish the picture puzzle.

Attack him through the door with your combat knife. (Keep the door closed, but open enough to let him squeeze through. While he's stuck inside the door, you can easily kill him.

Where's the mayor's daughter?

Leave the picture puzzle hall. You should be in a large junction. Take the hall to the South and go up the stairs. You'll need the key from Kyron's belt.

How do I cross the area with the skull? I keep getting teleported back to the start.

There's a folder in the Thief 2 directory called 'spoilers.' Look in there for a picture.

How do I defeat the gas arrow traps?

Crouch and then move gently sideways until you trigger the floor. Just touching the floor is sufficient, and then quickly move back. Do this to all three floor triggers.

How do I cool the lever so I can frob it.

Climb up and put out the flames in the furnace.

Loot List by Ricebug

Item	Location	Value	Cum
Pagan Village			
Treebeast mask	Fireplace chimney, SE house	50	50
Fine wine	Floor in East house, near book	50	100
Purse	Sleeping thief in East house	100	150
Demon Gaze Room			
LC jar	Gated wall alcoves	75	250
Gemstone		200	325
LC tapestry		150	525
LC jar X 2		40	675
LC jar, small		20	715
LC jar, pointed X 3		60	735
LC gem X 3	Behind secret panel, S wall, SE corner. (Switch located behind statue in NW corner.)	45	795
Skull Puzzle Area			
LC Jar	Center gated upper alcove on right side of skull puzzle floor. (Need rope)	100	840
Statuette	Behind 3 grates (switch is above, in wall niche)	15	940
Crystal chunk	Behind 3 grates (switch is above, in wall niche)	25	955
Spice bag	Behind painting opened by small switch behind skeleton's hand	200	980
Gas Puzzle Area			
Gold nugget	Secret room opened by 4 buttons	150	1180
LC Jar	Pedestal in room East of gas trap hallway	300	1330
Creepy Church Area			
LC tapestry	Wall alcove, top of stairs, near locked blue portals, N side	150	1630
LC tapestry	Wall alcove, top of stairs, near locked blue portals, S side	150	1780
Serpentile Torc	Pedestal behind blue portal, top of stairs, SW corner	350	1930
LC gem	Pedestal behind blue portal, top of stairs, NW corner	15	2280
LC jar, various sizes X 4	Crawlspace above church entrance, where skeleton is	135	2295
LC tapestry		150	2430

Crystal chunk		25	2580
Silver nugget		50	2605
LC gem		15	2655
Gold nugget	Dirt pile on N side of sanctuary	50	2670
Gold nugget	Floor recess behind stocks, East of dog statues	50	2720
Kyron's Apartment Area			
Ornate Plate	Small table in living room	10	2770
Gold candlestick X 2	Bathroom tub	100	2780
Scattered coins	Window sill near toilet	40	2880
Purse	Chest in bedroom	100	2920
Purple vase X 2	Bedroom tables	200	3020
Purple goblet X 2		30	3220
Fine wine	Cabinet table in living room	50	3250
Gold vase		100	3300
Collection plate	Small table in living room	10	3400
Gold candlestick	Desk in living room	50	3410
Scattered coins X 2	Two coffee tables in upside-down hall	120	3460
Miscellaneous Areas			
LC jar X 5	Secret panel above N wall of staircase leading to door opened with Exit Key.	155	3580
LC gem X 5	Secret room behind wall relief NW corner of room where you first enter temple. (Next to wall with red openings cut like a skull and at top of stairs leading down to Demon Gaze room.) Switch to open located on S wall, bottom left of skulls relief picture above 3 fire grates.	75	3735
LC Jar	Floor behind secret door in upper guard post. Open with nearby torch lever.	200	3810
Gold nugget	Top of dirt pile in hall next to water pool and broken pipe.	100	4010
Serpentile Torc	Chest in storage room below furnace that needs to be extinguished to frob lever. Gate is between two gargoyle statues.	500	4110
Gold nugget	Ledge above stairway leading to door opened with Exit Key, where zombies are laying.	100	4610
TOTAL			4710